

**ADACTA**

# **AdInsure Underwriting Workbench**

**Your Central Hub for Digital Underwriting  
of Commercial P&C lines.**



# AdInsure UW Workbench provides comprehensive features for Underwriting of complex commercial coverages

## Underwriter Dashboard

- End-to-end UW workflow management
- Easy configurable underwriting process
- Rules engine
- Task overview and assignment, collaboration support.
- Readily available reports with the possibility to include third-party data.

## Case and Opportunity Management

- Guided workflow between applications, quotes, and policies
- Direct input of opportunities into AdInsure or integration with existing Broker and CRM platforms
- Creation of quotes and policies in AdInsure or integration with existing Policy back-ends
- Opportunity scoring
- Communication and Print-outs

## Risk Management

- Questionnaires-based risk assessment
- Inspection management; select objects and partners, and create tasks

## Technical Capabilities

- Easy integration with existing IT systems via standard REST API, SOAP/XML
- Tools for non-IT personnel for easy configuration of the policy data model, processes, business rules, and UI forms

## Clause Management

- Clause Library
- Automated selection of suitable mandatory clauses matching coverages and distribution partners
- Selection of additional clauses and inclusion of manual clauses
- Underwriting and pricing of new clauses

## Other Premium out-of-the-box features

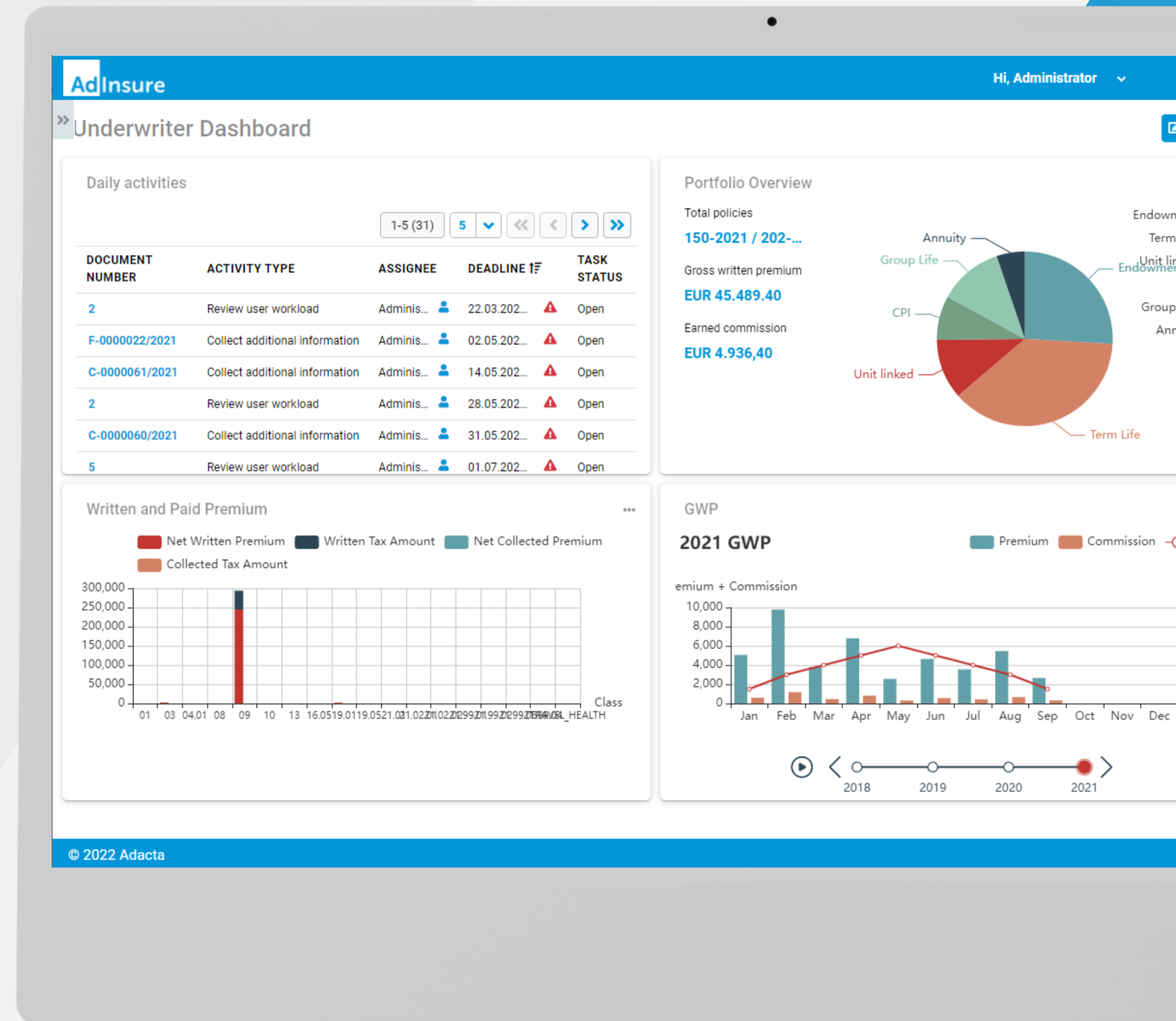
- Rating engine (premium calculation)
- Customer management with a 360-degree view
- Business partner management
- Capacity management: Coinsurance, Reinsurance
- Insured Object Import

# AdInsure Underwriting Workbench Features

Configurable quote/policy model per product line – you can model any quote/policy structure and corresponding UW process.

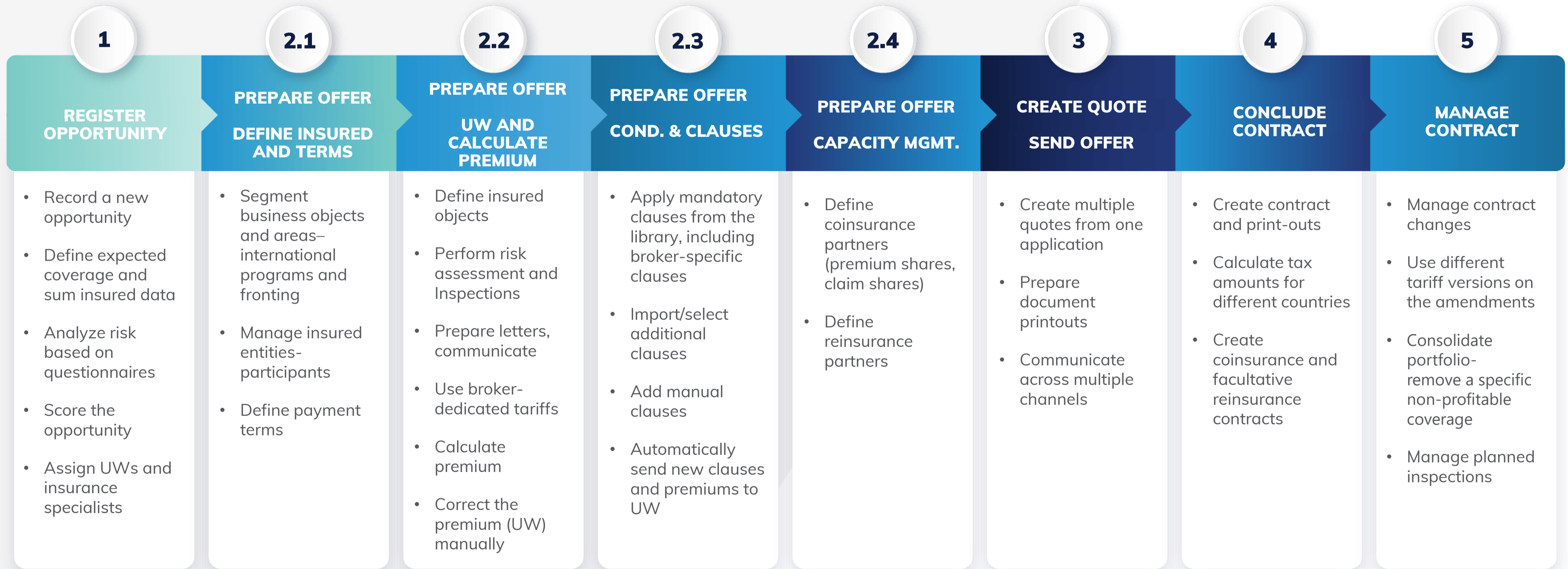
Support for automated selection of terms and conditions and manual/bespoke terms editing.

Plug-and-play – integrate standard rating engine, customer database, and coinsurance/reinsurance with third-party systems, already existing in your IT landscape





# AdInsure UW Workbench features an Out-of-the-Box Underwriting Process

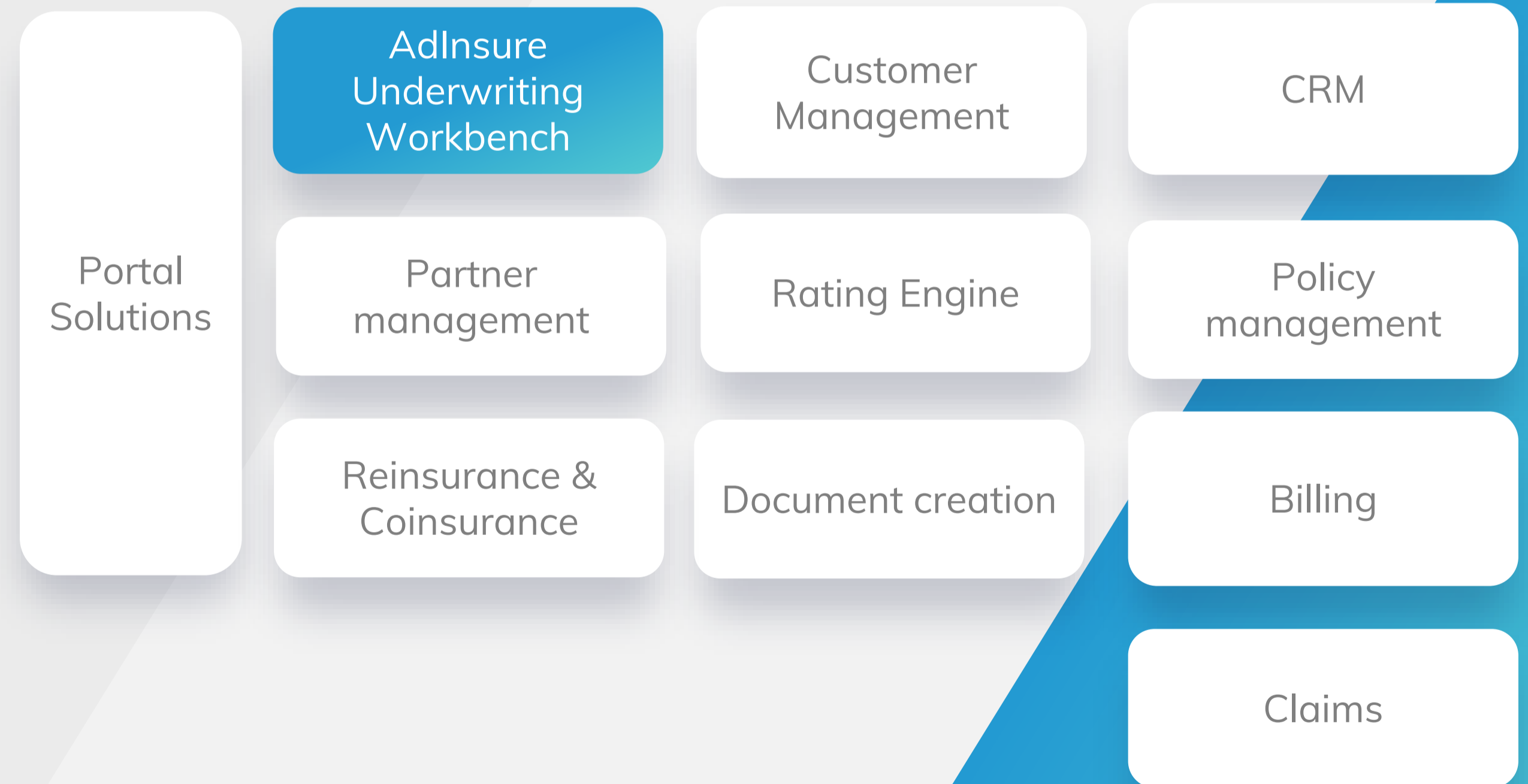


# AdInsure Underwriting Workbench can easily be integrated with existing systems of the insurance company

- Client and Partner management
- Rating engine
- Document creation
- Reinsurance and coinsurance

New opportunities can be recorded automatically from the input document system, such as OCR, CRM, and portals.

Underwritten policies can be transferred to the core policy management system via ESB, direct REST API/SOAP/XML calls, file import/export, etc.



# AdInsure enhances Underwriting Efficiency and Performance with Collaborative and Automated Solutions

## Enhanced Services and Clarity

AdInsure workbench centralizes operations and data transparency, resulting in streamlined client service.

## Improved Collaboration and Transparency

AdInsure ensures a smooth transition of tasks across teams, and easy progress monitoring offering transparency across the whole UW process.

## Enhanced productivity through automation

AdInsure removes the need for many manual activities through rule-based automation of the UW workflow, data input, and more.

## Optimized Case Assignment

AdInsure meticulously directs tasks to the appropriate team member or department, ensuring refined case management and accountability.

## Integrated System Efficiency

AdInsure consolidates platforms and communication pathways, eradicates the need for redundant data entry across systems minimizing errors..



# About Adacta

Adacta is one of the leading software vendors for the insurance industry. Established in 1989, we spent decades helping insurance organizations to grow their digital capabilities and drive new profits.

Our mission is simple: empower tomorrow's industry leaders to reach their potential through technology.



ADACTA